

Bambino, nato 07.05.2012

Accession n° **Esame**
0040711740 Eco addome completo

Data Esecuzione
14/11 /2012

Referto:

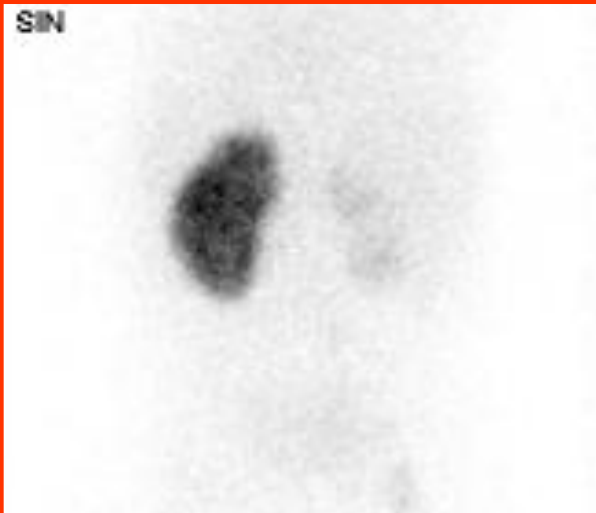
Reni in sede, regolari per volume, morfologia ed ecostruttura, con regolare differenziazione cortico-midollare.

Permane lieve ipotonia della pelvi renale di destra con diametro AP di 8 mm.

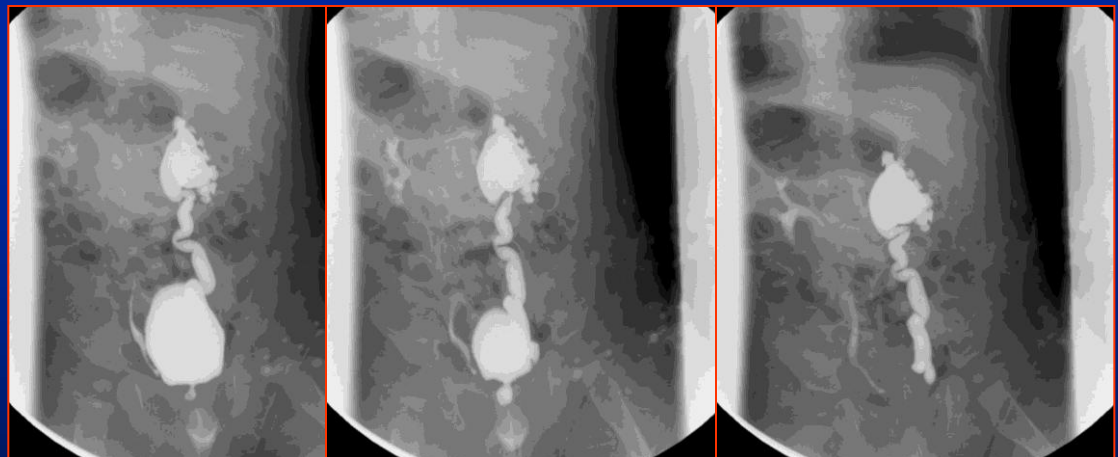
Non dilatate le cavità calico-pieliche a sinistra.

Non dilatazioni ureterali, bilateralmente.

Vescica modicamente distesa, con pareti regolari.



DMSA 15.11.12



VCUG dicembre 2012

Scars - diagnosis

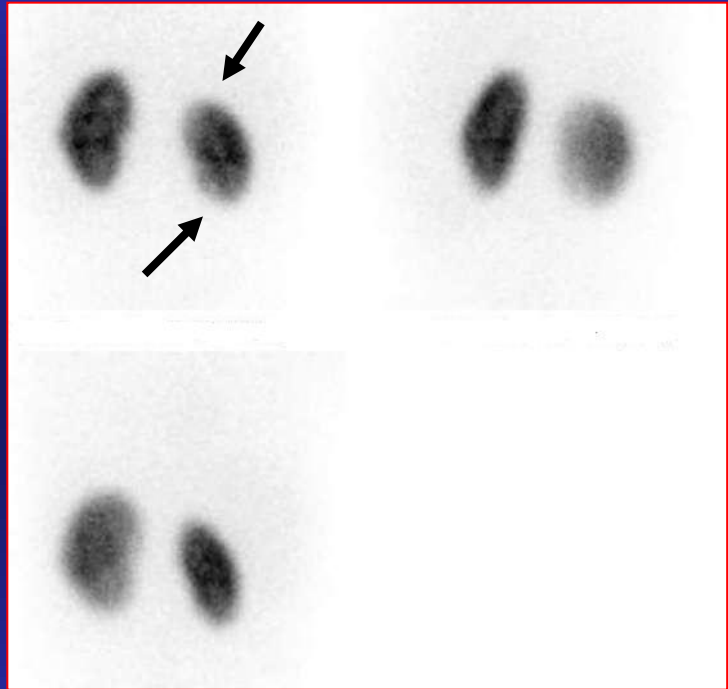
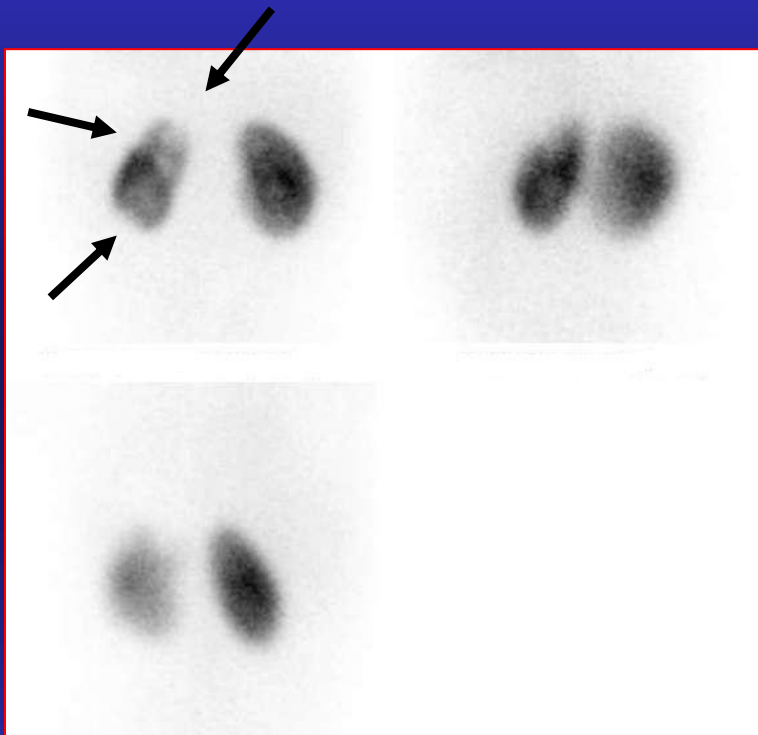
• DMSA	reference
	Sens.
• US	22-31 %

Sinha MD. et al., Nephrol Dial Transplant. 2007, 22(8):2213- 6

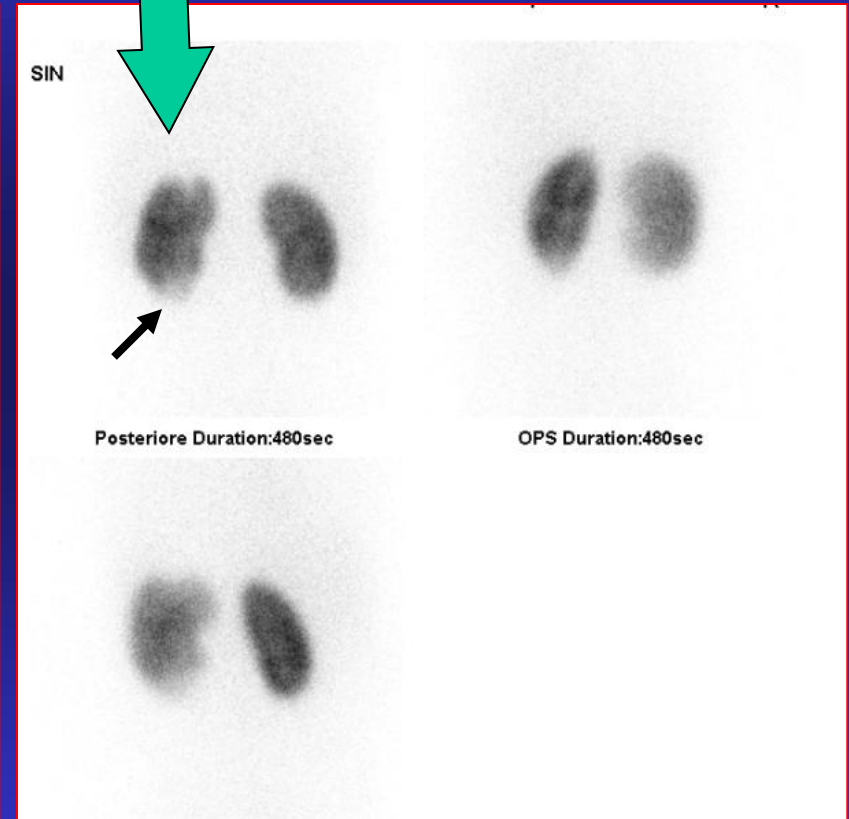
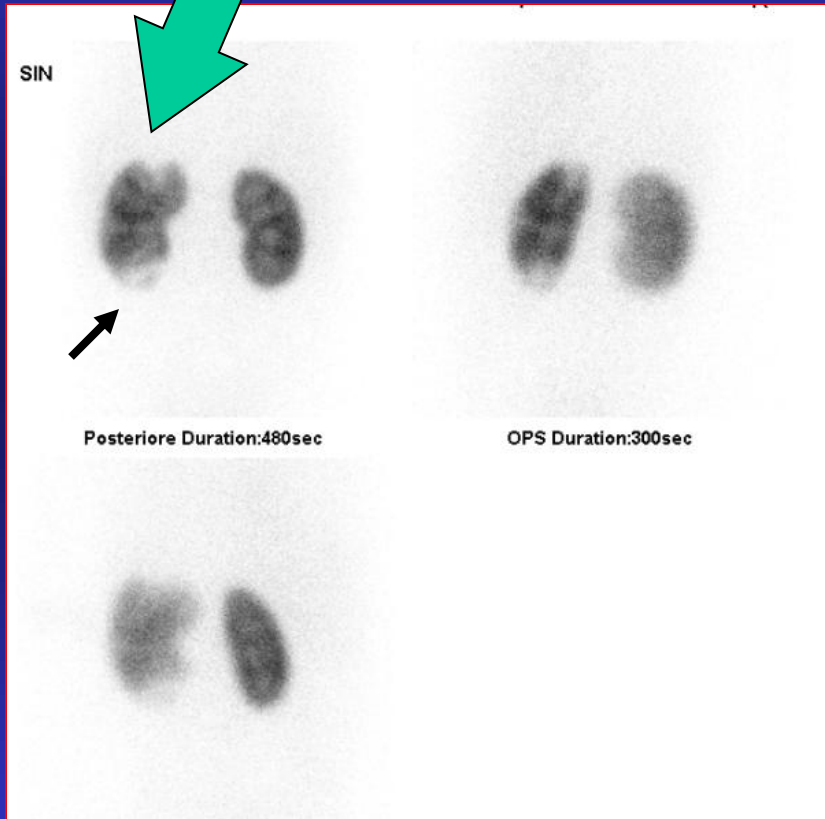
...if the detection of renal scars is the reason for imaging in children with UTIs,

US ALONE IS INAPPROPRIATE AT ANY AGE

DMSA ought to be the primary investigation.



Pielonefrite acuta. Esito in cicatrice

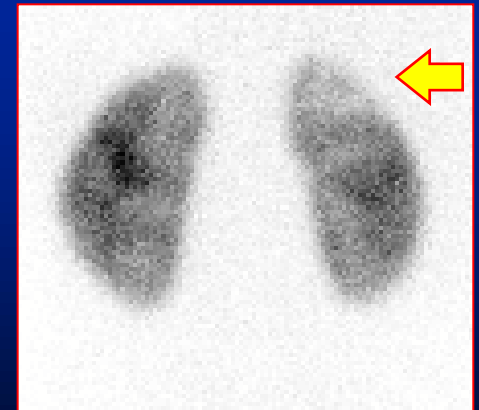
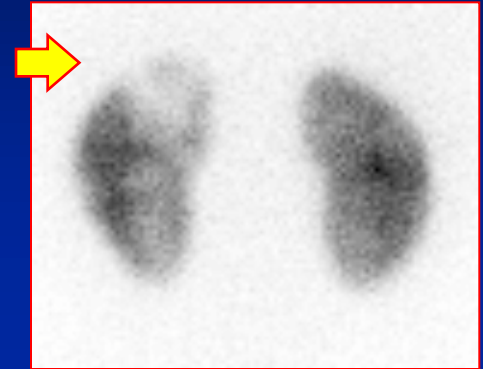


Acute pyelonephritis - diagnosis

	Sens.	Spec.
• DMSA	92 %	94 %
• helical TC	87 %	88 %
• MRI	90 %	88 %
• Power doppler	74 %	57 %
• US + contrast	90 %	75 %

Majd M. et al., Radiology 2001, 218:101- 8
Farhat W. et al., J Urol 2002, 168(3): 1114-17

Acute pyelonephritis



The problem

Garin EH et al., *Diagnostic significance of clinical and laboratory findings to localize site of UTI.*
Ped Nephrol. 2007 Jul 22 (7):1002-1006.

“...33% of patients with cystitis were diagnosed as Pyelonephritis ...”

“...22% of those with pyelonephritis were considered to have cystitis ...”

*“...there is always some uncertainty
as to whether the first documented
UTI is truly the first UTI...”*

Smith E.A., Pediatr Radiol 2008, 38 [suppl.1]:s76-82

Prima infezione delle vie urinarie ??

MAG3

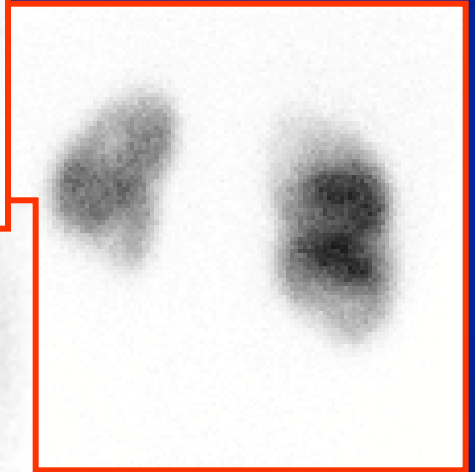
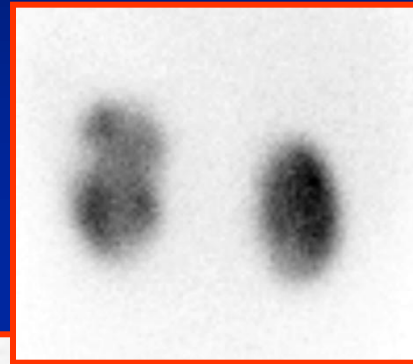


GFR

$^{51}\text{Cr-EDTA}$

70 ml/min/1.73m²

DMSA



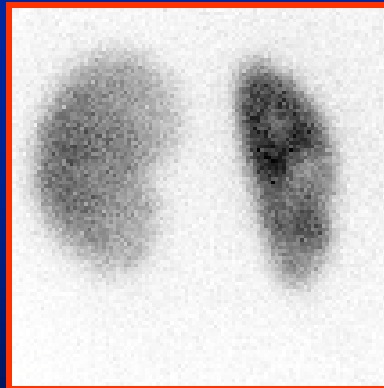
Bambino di 6 anni con due episodi di PNA. ECO normali.

Sc. renale statica:

Duplex destro con nefropatia emirene inferiore



POST



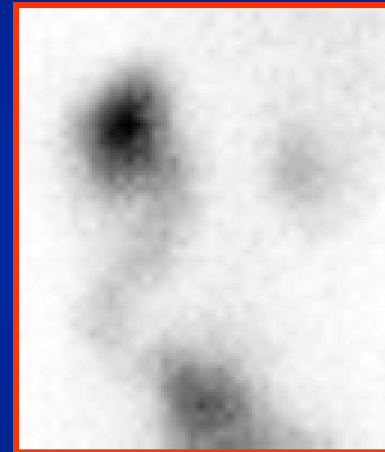
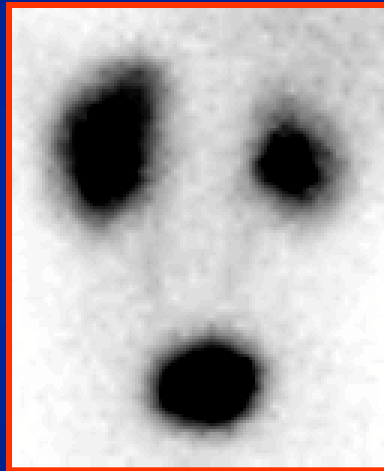
OPD



OPS

Bambina di 4 mesi

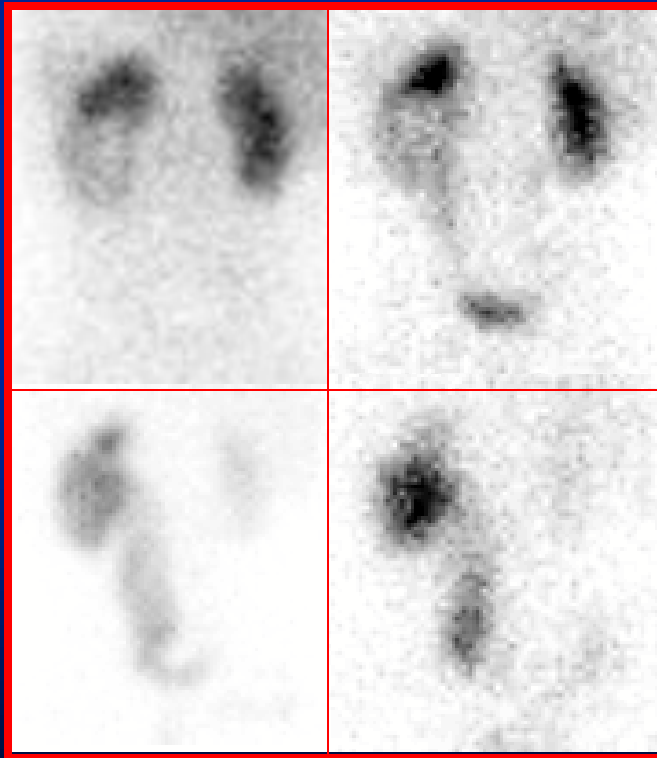
D neonatale di idroureteronefrosi



**Duplicazione completa del sistema
escretore**

Bambino di 4 mesi

- 1° episodio di PNA.
- ECO + CUM: megauretere con RVU III



Duplex completo
Ostruzione
inferiore?

Ectopia crociata refruente

